



QUALITY COMFORT EVERYWHERE

HOME RANGE MULTISPLIT



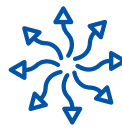
Multiple combinations, great versatility

With **HTW** multi systems you can install from 2 to 5 indoor units having **independent control** over each one of them.



Efficiency

The DC inverter technology, combined with the higher efficiency of the equipment at partial loads, makes the multi IX43 systems highly energy-efficient, thus reducing electricity consumption.



Flexibility

With the multi IX43 systems; split, cassette, duct or floor console indoor units can be combined in the same system and controlled individually.



Space and noise saving

With a multisplit system we reduce the surface area needed to install outdoor units. By reducing the number of compressors, we also reduce the noise level generated.



Easy control

The split, duct and cassette indoor units are Wifi Ready. By purchasing the optional WiFi module, we can control the units via mobile phone or even by voice with Alexa and Google Home.



Useful life

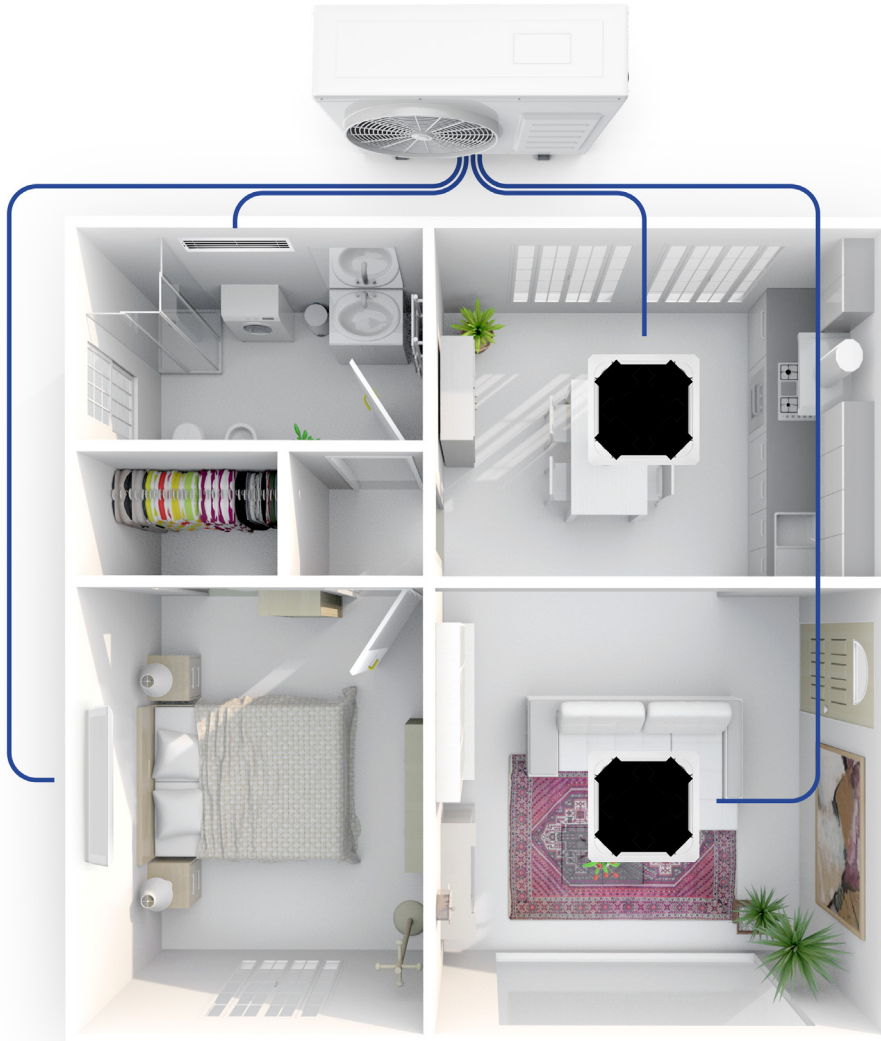
The coils of the outdoor and indoor units are coated with the golden fin anti-corrosion coating. This coating protects the units against corrosion in saline environments.



Quiet

The outdoor unit has a silent mode that is automatically activated at night. The compressor and fan reduce their operating frequencies to limit the noise level, facilitating a good night's rest.

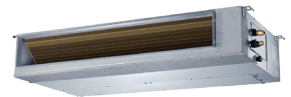
With the **multi IX41B system** we can make a variety of combinations from **2x1** to **5x1**.



Outdoor unit IX41B



Split IX21D



Duct IX43



Cassette IX43



Console IX43



IX41B R32

OUTDOOR UNIT

MODELS



		HTW-M02-041IX41BR32	HTW-M02-052IX41BR32	HTW-M03-061IX41BR32	HTW-M03-080IX41BR32
Power supply	V, P, Hz	220-240V (1 Phase ~ 50Hz)			
PERFORMANCE					
Cooling capacity	Rated capacity (min-max)	kW 4,1 (1,82 - 4,8)	5,27 (2,1 - 6,86)	6,1 (1,93 - 6,86)	8 (2,96 - 8,5)
		Btu/h 14000 (6210 - 16400)	18000 (7000 - 23400)	21000 (6619 - 23420)	27000 (10100 - 29000)
	Rated consumption (min-max)	W 1270 (168 - 1714)	1630 (650 - 2000)	1950 (180 - 2240)	2450 (235 - 3220)
	SEER	- 5,6	5,3	6,1	6,1
	Energy class	Cold A+	A+	A++	A++
Heating capacity	Rated capacity (min-max)	kW 4,4 (1,53 - 5,1)	5,5 (2,34 - 7,24)	6,6 (1,73 - 7,2)	8,2 (2,03 - 9,38)
		Btu/h 15000 (5220 - 17400)	19000 (8000 - 24700)	22500 (5900 - 24740)	28000 (6950 - 32000)
	Rated consumption (min-max)	W 1185 (265 - 1707)	1390 (600 - 1670)	1780 (325 - 1920)	2100 (310 - 2890)
	SCOP	- 3,8	3,8	4	4
	Energy class	Heat A	A	A+	A+
FEATURES					
Sound power	dB(A)	64	65	65	67
Sound pressure	dB(A)	57	56	57,5	54
Air flow	m³/h	2.200	2.200	3.000	2.700
Hot/cold operating temperature	°C	(-15 ~ 50) / (-15 ~ 24)	(-15 ~ 50) / (-15 ~ 24)	(-15 ~ 50) / (-15 ~ 24)	(-15 ~ 50) / (-15 ~ 24)
Compressor		GMCC	GMCC	GMCC	GMCC
Refrigerant	Type / Charge	R32/Kg 1,1	1,25	1,4	1,72
	Metres of preloaded pipe	m 15	15	22,5	22,5
	Additional load	g/m 12	12	12	12
DIMENSIONS AND WEIGHT					
Indoor unit	Net dimensions (WxHxD)	mm 800x554x333	800x554x333	845x702x363	845x702x362
	Gross dimensions (WxHxD)	mm 920x615x390	920x615x390	965x775x395	965x775x395
	Net/gross weight	kg 31,6/34,7	36/38,5	47/51	51/56
CONNECTIONS					
Refrigeration piping	Liquid - Gas	Inch. (1/4" - 3/8") x 2	(1/4" - 3/8") x 2	(1/4" - 3/8") x 3	(1/4" - 3/8") x 3
	Total max. length	m 40	40	60	60
	Max. length 1 indoor unit	m 25	25	30	30
	Max. elevation between indoor/outdoor	m 15	15	15	15
	Elevation max. between indoor units	m 10	10	10	10
Electrical connections	Supply	mm 2 x 2,5 + T	2 x 2,5 + T	2 x 4 + T	2 x 4 + T
	Interconnection	mm 3 x 2,5 + T	3 x 2,5 + T	3 x 2,5 + T	3 x 2,5 + T

MODELS

		HTW-M04-082IX41BR32	HTW-M04-105IX41BR32	HTW-M05-120IX41BR32			
Power supply	V, P, Hz	220-240V (1 Phase ~ 50Hz)					
PERFORMANCE							
Cooling capacity	Rated capacity (min-max)	kW 8,2 (2,05 - 9,85)	10,5 (2,05 - 12,6)	12,3 (2,05 - 14,5)			
		Btu/h 28000 (7000 - 33600)	36000 (7000 - 43200)	42000 (7000 - 48300)			
	Rated consumption (min-max)	W 2540 (890 - 3180)	3270 (1140 - 4090)	4260 (1490 - 4580)			
	SEER	- 6,1	6,2	6,1			
	Energy class	Cold A++	A++	A++			
Heating capacity	Rated capacity (min-max)	kW 8,79 (2,34 - 10,5)	10,84 (2,34 - 13)	12,3 (2,34 - 14,77)			
		Btu/h 30000 (8000 - 36000)	37000 (8000 - 44400)	42000 (8000 - 50400)			
	Rated consumption (min-max)	W 2200 (770 - 2750)	2760 (970 - 3450)	3100 (1090 - 4000)			
	SCOP	- 3,8	3,8	3,5			
	Energy class	Heat A	A	A			
FEATURES							
Sound power	dB(A)	67	67	69			
Sound pressure	dB(A)	61,5	63	64			
Air flow	m³/h	3.800	4.000	3.850			
Hot/cold operating temperature	°C	(-15 ~ 50) / (-15 ~ 24)	(-15 ~ 50) / (-15 ~ 24)	(-15 ~ 50) / (-15 ~ 24)			
Compressor		GMCC	GMCC	GMCC			
Refrigerant	Type / Charge	R32/Kg 2,1	2,1	2,4			
	Metres of preloaded pipe	m 30	30	37,5			
	Carga adicional	g/m 12	12	12			
DIMENSIONS AND WEIGHT							
Indoor unit	Net dimensions (WxHxD)	mm 946x810x410	946x810x410	946x810x410			
	Gross dimensions (WxHxD)	mm 1090x875x500	1090x875x500	1090x875x500			
	Net/gross weight	kg 62/67	69/76	73/80			
CONNECTIONS							
Refrigeration piping	Liquid - Gas	Inch. (1/4" - 3/8") x 3	(1/4" - 1/2") x 1	(1/4" - 3/8") x 3	(1/4" - 1/2") x 1"	(1/4" - 3/8") x 3	(1/4" - 1/2") x 2
	Total max. length	m 80	80	80	80		
	Max. length 1 indoor unit	m 35	35	35	35		
	Max. elevation between indoor/outdoor	m 15	15	15	15		
	Elevation max. between indoor units	m 10	10	10	10		
Electrical connections	Supply	mm 2 x 4 + T	2 x 6 + T	2 x 6 + T	2 x 6 + T		
	Interconnection	mm 3 x 2,5 + T	3 x 2,5 + T	3 x 2,5 + T	3 x 2,5 + T		



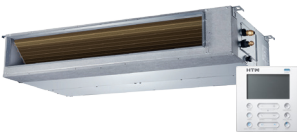
PLASMA ION GENERATOR + TRIPLE FILTER

-  Golden Fin Protection
 -  I feel Function
 -  Dehumidifier
 -  24 hour timer
 -  Auto diagnosis
 -  Anti-cold Function
 -  Drain on both sides
- 3 YEARS WARRANTY TOTAL QUALITY COMMITMENT
- Wi-Fi OPTIONAL
- Google Home amazon alexa

IX21D R32 SPLIT

MODELS

		HTW-MSI-020IX21D3R32		HTW-MSI-026IX21D3R32		HTW-MSI-035IX21D3R32		HTWS052IX21D3-R32-I		HTWS071IX21D3-R32-I		
Power supply		V, P, Hz		220-240V (1 Phase ~ 50Hz)								
		PERFORMANCE										
Cooling capacity	Capacity	kW	2,05	2,6	3,52	5,2	7,1					
		Btu/h	7.000	9.000	12.011	18.000	24.000					
	Consumption	W	20	20	20	34	62					
Heating capacity	Capacity	kW	2,34	2,9	3,8	5,56	7,3					
		Btu/h	8.000	10.000	13.000	19.000	25.000					
	Consumption	W	20	20	20	34	62					
		FEATURES										
Indoor unit	Sound power	dB(A)	54	53	53	55	59					
	Sound pressure	dB(A)	40/30/26/21	40/30/26/21	40/34/26/22	44/37/30/25	44,5/42/34,5/28					
	Air flow	m³/h	520/460/340	520/460/340	600/500/360	840/680/540	980/817/662					
	Selectable temperature range	°C	17~30	17~30	17~30	17~30	17~30					
		DIMENSIONS AND WEIGHT										
Indoor unit	Net dimensions (WxHxD)	mm	805x285x194	805x285x194	805x285x194	957x302x213	1040x327x220					
	Gross dimensions (WxHxD)	mm	870x365x270	870x365x270	870x365x270	1035x385x295	1120x405x315					
	Net/gross weight	kg	7,6/9,7	7,6/9,7	7,6/9,7	10/13	12,3/15,8					
		CONNECTIONS										
Refrigeration piping	Liquid - Gas	Inch.	1/4" - 3/8"	1/4" - 3/8"	1/4" - 3/8"	1/4" - 1/2"	3/8" - 5/8"					
Electrical connections	Supply	mm	from the outdoor	from the outdoor	from the outdoor	from the outdoor	from the outdoor					
	Interconnection	mm	3X2,5+T	3X2,5+T	3X2,5+T	3X2,5+T	3X2,5+T					



-  Golden Fin Protection
 -  Voice control
 -  Reduced height
 -  Condensate pump
 -  Wired controller Weekly control
 -  Fresh air inlet
 -  Possibility to set the return
- 3 YEARS WARRANTY TOTAL QUALITY COMMITMENT
- Compatible con AIRZONE
- Wi-Fi OPTIONAL

IX43 R32 DUCT

MODELS

		HTW-MDI-026IX43R32		HTW-MDI-035IX43R32		HTW-MDI-052IX43R32				
Power supply		V, P, Hz		220-240V (1 Phase ~ 50Hz)						
		PERFORMANCE								
Cooling capacity	Capacity	kW	2,6	3,5	5,2					
		Btu/h	9.000	12.000	18.000					
	Consumption	W	180	185	200					
Heating capacity	Capacity	kW	2,9	3,8	5,56					
		Btu/h	10.000	13.000	19.000					
	Consumption	W	180	185	200					
		FEATURES								
Indoor unit	Sound power	dB(A)	58	59	59					
	Sound pressure	dB(A)	40/34/27	40/37/27	41/38/33					
	Rated static pressure (min - max)	Pa	25 (0-40)	25 (0-60)	25 (0-100)					
	Air flow	m³/h	500/340/230	600/480/300	880/650/350					
	Selectable temperature range	°C	17~30	17~30	17~30					
		DIMENSIONS AND WEIGHT								
Indoor unit	Net dimensions (WxHxD)	mm	700x200x450	700x200x450	880x674x210					
	Gross dimensions (WxHxD)	mm	860x275x540	860x275x540	1070x725x280					
	Net/gross weight	kg	18/22	18/22	24/30					
		CONNECTIONS								
Refrigeration piping	Liquid - Gas	Inch.	1/4" - 3/8"	1/4" - 3/8"	1/4" - 1/2"					
Electrical connections	Supply	mm	from the outdoor	from the outdoor	from the outdoor					
	Interconnection	mm	3X2,5+T	3X2,5+T	3X2,5+T					
Optional Wifi			WIFIUFOIX43							

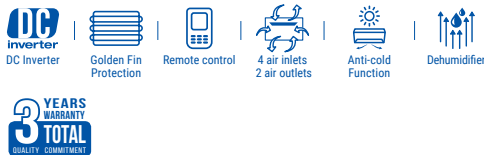


IX43 R32

CASSETTE

MODELS

			HTW-MC6-020IX43R32	HTW-MC6-026IX43R32	HTW-MC6-035IX43R32	HTW-MC6-052IX43R32
Power supply	V, F, Hz		220-240V (1 Phase ~ 50Hz)			
PERFORMANCE						
Cooling capacity	Capacity	kW	2,05	2,6	3,52	5,2
		Btu/h	7000	9000	12.011	17.743
	Consumption	W	40	40	40	102
Heating capacity	Capacity	kW	2,34	2,9	4,1	5,5
		Btu/h	8.000	10.000	13.990	18.767
	Consumption	W	40	40	40	102
FEATURES						
Indoor unit	Sound power	dB(A)	53	53	58	56
	Sound pressure	dB(A)	38/33/29	38/33/29	41/37/34	44/42/41
	Air flow	m³/h	580/500/450	580/500/450	617/504/415	680/560/500
	Selectable temperature range	°C	17~30	17~30	17~30	17~30
DIMENSIONS AND WEIGHT						
Indoor unit	Net dimensions (W×H×D)	mm	570x260x570 647x50x647 (panel)	570x260x570 647x50x647 (panel)	570x260x570 647x50x647 (panel)	570x260x570 647x50x647 (panel)
	Gross dimensions (W×H×D)	mm	662x317x662 715x123x715 (panel)	662x317x662 715x123x715 (panel)	662x317x662 715x123x715 (panel)	662x317x662 715x123x715 (panel)
	Net/gross weight	kg	15/17 2,5/4,5 (panel)	15/17 2,5/4,5 (panel)	15/17 2,5/4,5 (panel)	15/17 2,5/4,5 (panel)
CONNECTIONS						
Refrigeration piping	Liquid - Gas	Inch.	1/4" - 3/8"	1/4" - 3/8"	1/4" - 3/8"	1/4" - 1/2"
Electrical connections	Supply	mm	from the outdoor	from the outdoor	from the outdoor	from the outdoor
	Interconnection	mm	3X2,5+T	3X2,5+T	3X2,5+T	3X2,5+T
Optional Wifi	WIFIUFOIX43					

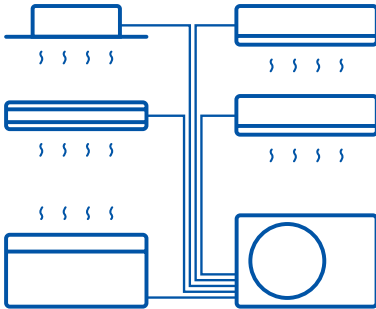


IX43 R32

CONSOLE

MODELS

			HTW-MFI-35IX43R32	HTW-MFI-46IX43R32
Power supply	V, F, Hz		220-240V (1 Phase ~ 50Hz)	
PERFORMANCE				
Cooling capacity	Capacity	kW	3,52 (0,77 ~ 3,81)	4,8 (2,6~4,9)
		Btu/h	12.000 (2.627~12.983)	16.500 (9.000~17.000)
Heating capacity	Capacity	kW	3,81 (0,46~4,34)	4,9 (2,1~5,7)
		Btu/h	13.000 (1.568~14.808)	17.000 (7.500~19.600)
FEATURES				
Indoor unit	Sound power	dB(A)	55	60
	Sound pressure (H/M/L/SL)	dB(A)	43/41,5/35/25	42,5/39/35/25
	Air flow	m³/h	512/480/370	560/480/400
	Selectable temperature range	°C	17 - 30	17 - 30
DIMENSIONS AND WEIGHT				
Indoor unit	Net dimensions (W×H×D)	mm	700x600x210	700x600x210
	Gross dimensions (W×H×D)	mm	810x710x305	810x710x305
	Net/gross weight	kg	14,8 / 19	14,8 / 19
CONNECTIONS				
Refrigeration piping	Liquid - Gas	Inch.	1/4" - 3/8"	1/4" - 1/2"
Electrical connections	Supply	mm	from the outdoor	from the outdoor
	Interconnection	mm	3X2,5+T	3X2,5+T



Combinations **Indoor unit combinations for HTW-M02-041IX41BR32**

1 unit	7K	9K	12K	18K	
2 units	7+7K	7+9K	7+12K	9+9K	9+12K

Combinations **Indoor unit combinations for HTW-M02-052IX41BR32**

1 unit	7K	9K	12K	18K	
2 units	7+7K 12+12K	7+9K	7+12K	9+9K	9+12K

Combinations **Indoor unit combinations for HTW-M03-061IX41BR32**

1 unit	7K	9K	12K	18K	
2 units	7+7K 9+12K	7+9K 9+18K	7+12K 12+12K	7+18K	9+9K
3 units	7+7+7K	7+7+9K	7+7+12K	7+9+9K	9+9+9K

Combinations **Indoor unit combinations for HTW-M03-080IX41BR32**

1 unit	7K	9K	12K	18K	24K
2 units	7+7K 9+9K 12+18K	7+9K 9+12K 12+24K	7+12K 9+18K 18+18K	7+18K 9+24K	7+24K 12+12K
3 units	7+7+7K 7+12+12K	7+7+9K 9+9+9K	7+7+12K 9+9+12K	7+9+9K 9+12+12K	7+9+12K 12+12+12K

Combinations **Indoor unit combinations for HTW-M04-082IX41BR32**

1 unit	7K	9K	12K	18K	24K
2 units	7+7K 9+9K 12+18K	7+9K 9+12K 12+24K	7+12K 9+18K 18+18K	7+18K 9+24K	7+24K 12+12K
3 units	7+7+7K 7+9+12K 9+9+18K	7+7+9K 7+9+18K 9+12+12K	7+7+12K 7+12+12K 12+12+12K	7+7+18K 9+9+9K	7+9+9K 9+9+12K
4 units	7+7+7+7K 7+9+9+9K	7+7+7+9K 9+9+9+9K	7+7+7+12K	7+7+9+9K	7+7+9+12K

Combinations

Indoor unit combinations for HTW-M04-105IX41BR32

1 unit	7K	9K	12K	18K	24K
2 units	7+7K 9+9K 12+18K	7+9K 9+12K 12+24K	7+12K 9+18K 18+18K	7+18K 9+24K	7+24K 12+12K
3 units	7+7+7K 7+9+9K 7+12+18K 9+9+18K 9+18+18K	7+7+9K 7+9+12K 7+12+24K 9+9+24K 12+12+12K	7+7+12K 7+9+18K 7+18+18K 9+12+12K 12+12+18K	7+7+18K 7+9+24K 9+9+9K 9+12+18K	7+7+24K 7+12+12K 9+9+12K 9+12+24K
4 units	7+7+7+7K 7+7+9+12K 7+9+9+12K 9+9+9+12K	7+7+7+9K 7+7+9+18K 7+9+9+18K 9+9+9+18K	7+7+7+12K 7+7+12+12K 7+9+12+12K 9+9+12+12K	7+7+7+18K 7+7+12+18K 7+12+12+12K 9+12+12+12K	7+7+9+9K 7+9+9+9K 9+9+9+9K 12+12+12+12K

Combinations

Indoor unit combinations for HTW-M05-120IX41BR32

1 unit	7K	9K	12K	18K	24K
2 units	7+7K 9+9K 12+18K	7+9K 9+12K 12+24K	7+12K 9+18K 18+18K	7+18K 9+24K	7+24K 12+12K
3 units	7+7+7K 7+9+9K 7+12+18K 9+9+18K 9+18+18K	7+7+9K 7+9+12K 7+12+24K 9+9+24K 12+12+12K	7+7+12K 7+9+18K 7+18+18K 9+12+12K 12+12+18K	7+7+18K 7+9+24K 9+9+9K 9+12+18K 12+12+24K	7+7+24K 7+12+12K 9+9+12K 9+12+24K 12+18+18K
4 units	7+7+7+7K 7+7+9+9K 7+7+12+24K 7+9+9+24K 7+12+12+12K 9+9+9+24K 9+12+12+18K	7+7+7+9K 7+7+9+12K 7+7+18+18K 7+9+12+12K 7+12+12+18K 9+9+12+12K 12+12+12+12K	7+7+7+12K 7+7+9+24K 7+9+9+9K 7+9+12+18K 9+9+9+9K 9+9+12+18K 12+12+12+18K	7+7+7+18K 7+7+12+12K 7+9+9+12K 7+9+12+24K 9+9+9+12K 9+9+12+24K	7+7+7+24K 7+7+12+18K 7+9+9+18K 7+9+18+18K 9+9+9+18K 9+12+12+12K
5 units	7+7+7+7+7K 7+7+7+9+12K 7+7+9+9+12K 7+7+12+12+18K 7+9+12+12+12K 9+9+12+12+12K	7+7+7+7+9K 7+7+7+9+18K 7+7+9+9+18K 7+9+9+9+9K 9+9+9+9+9K	7+7+7+7+12K 7+7+7+12+12K 7+9+9+9+12K 9+9+9+9+12K	7+7+7+7+18K 7+7+7+12+18K 7+7+9+12+18K 7+9+9+9+18K 9+9+9+9+18K	7+7+7+9+9K 7+7+9+9+9K 7+7+12+12+12K 7+9+9+12+12K 9+9+9+12+12K

Notes:

Capacity data under standard conditions. Actual data will vary depending on installation location and use.

Sound pressure values are measured at a distance of 1m in a semi-anechoic chamber.

The dimensions of the electrical wiring are approximate and should be calculated according to the conditions of the installation itself.